

FITTING THE JAMBS

Door Pack Contents:

Door x 1 (2 for double doors)

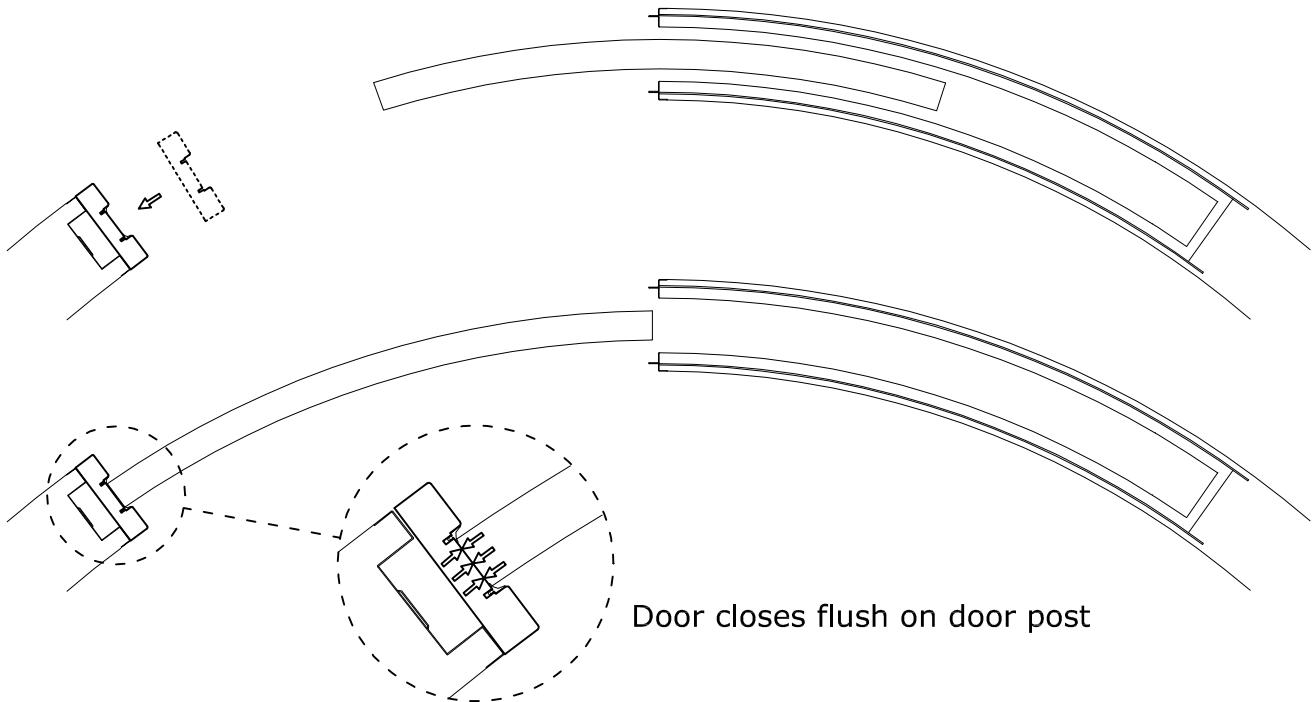
Vertical Jambs for entrance to pocket x 2 (4 for double doors)

Top Horizontal Jambs x 1 (2 for double doors)

Wooden Door Post x 1 (not supplied for double doors)

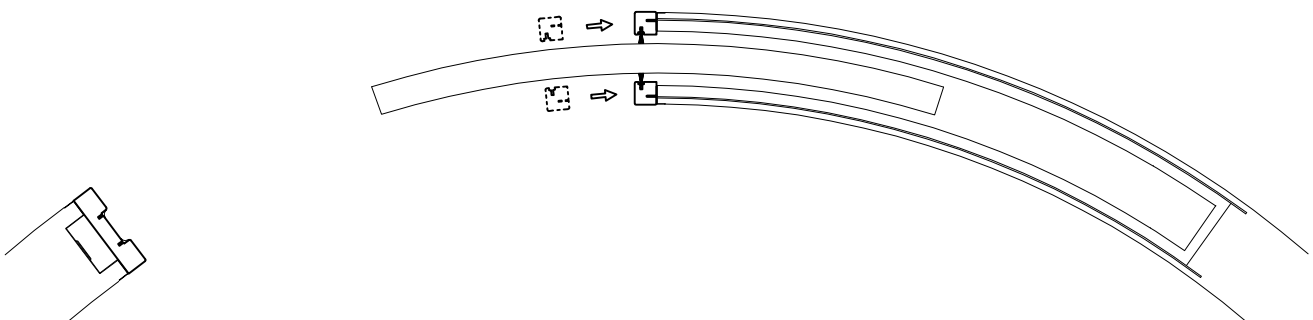
Step 1

Door Post - Take the door post and cut (on the bottom) to correct size from finished floor level to top of rail. Drill and countersink 4 pairs of equidistant holes through the recesses in the door post (these will then be covered by the rubber bumpers) and position loosely into place by screwing to the metal doorpost. Close the door against the door post to check alignment and if necessary pack out the door post as required and screw into position. Cut and push fit the rubber bumpers into the rebates inside the recess on the door post. At this stage adjust the front door stop on the track so the door closes into the recess in the door post and just touches the rubber bumpers.



Step 2

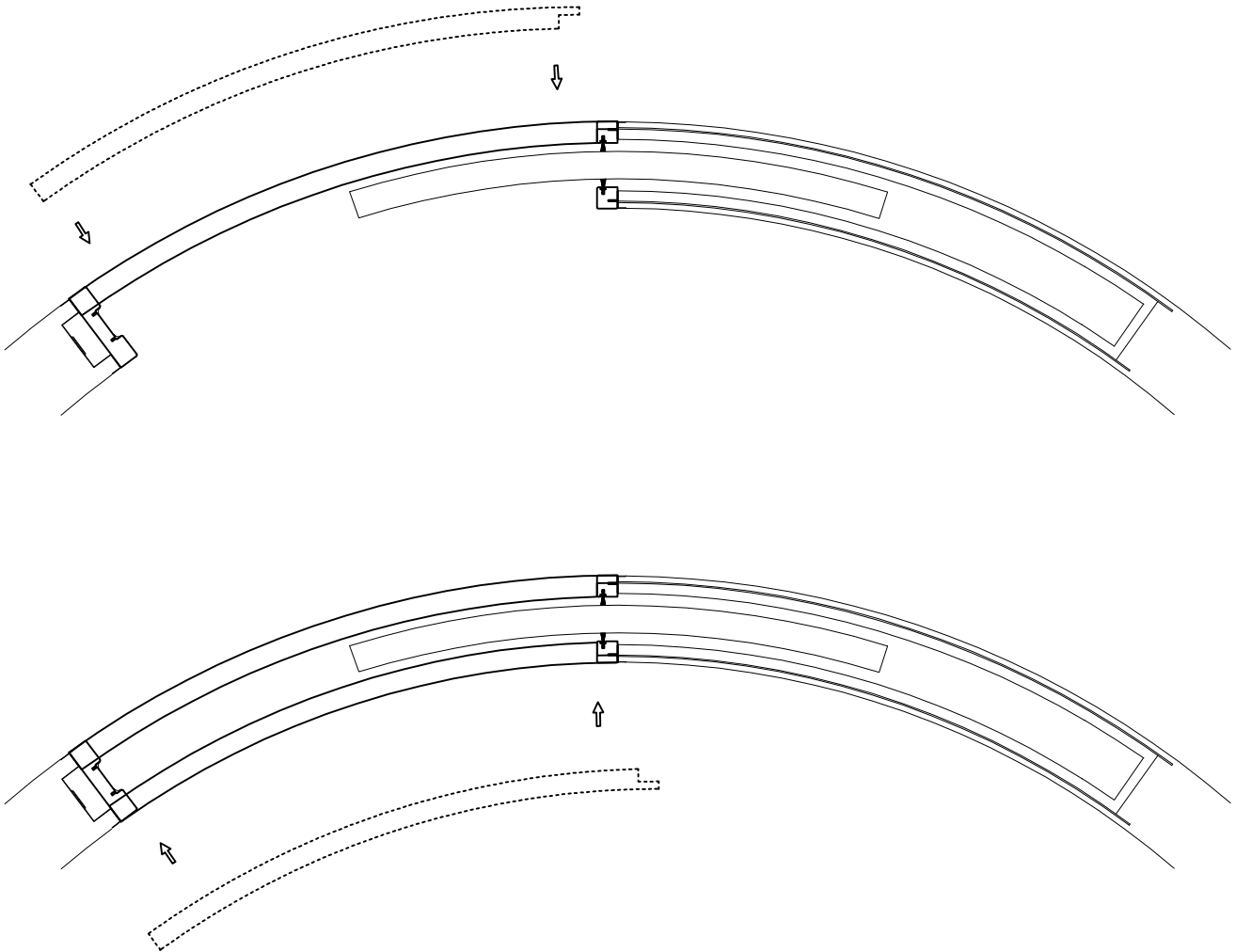
Vertical Jambs - Cut the vertical pocket entrance jambs to length and insert the dust brushes then use 4 or 5 blobs of quality silicon attach them to the metal pocket entrance verticals using the pre-routed section of the jamb



Step 3

Top Horizontal Jambs - There is one top horizontal jamb piece supplied which needs to be cut to size for each side. One end is rebated on each side for attachment to the rebate on the vertical jamb and the other end of the jamb should be flush to rest on the shoulder of the wooden door post.

We **STRONGLY RECOMMEND** that you cut each length at least 6mm longer than you measure the gap to be, and then gradually remove 2 mm at a time until the perfect length is obtained. This is because of the difficulty in measuring both the internal and external measurements. When cut fit dust brushes in the routed position and silicon the top edge to the top frame.



Step 4

Architraves - measure and cut architraves to size.